



COWBOY MAGIC®

Dog Grooming Series

E-BOOK I

Dog Grooming - Book 1

By Audrey Pavia



1 Chapter 1

What is Your Dog's Coat type?

Dogs come in all different coat types, depending on their breed or mix of breeds. Before you set out to start grooming your dog, understand his coat type.



4 Chapter 2

Detangling Matted Coats

In addition to his good-natured disposition, your dog's long, silky coat is one of his most wonderful traits. But it can also be one of his most challenging.



7 Chapter 3

Proper Ear Care

The canine ear is an amazing part of the dog's body. Using their superior auditory system, dogs can hear things that humans can't even fathom.



Chapter 1

What is Your Dog's Coat type?



Dogs come in all different coat types, depending on their breed or mix of breeds. Before you set out to start grooming your dog, understand his coat type. That little bit of knowledge will give you the edge when it comes to making him look his best. To determine what kind of coat type your dog has, take a close look at his fur. Examine it and determine which of the following categories it fits into.

Short smooth coat, with no undercoat, similar to what is seen on Pugs, Rhodesian Ridgebacks and Dobermans. Use a bristle brush or a hound glove, and brush against the lay of the hair. Using the same tool,



brush with the lay of the topcoat. Dogs with this type of coat can benefit from a bath with **COWBOY MAGIC® Rosewater Shampoo** and **COWBOY MAGIC® Rosewater Conditioner** after they have been brushed. The shampoo and conditioner will make the hair shine and will help repel dust and dirt. The dog should be towel dried after its bath, and allowed to dry naturally.

Short double coat, flat with straight, coarse hair on the outside and a soft, thin undercoat beneath. Labradors and Rottweilers have this kind of coat. Using a slicker brush or pin brush, start by taking sections of the dog's coat and separating it with your hand. Use the brush



to comb out the undercoat, brushing outward from the skin. If you come across a mat, add a dime size of **COWBOY MAGIC® Detangler™ & Shine** and work the mat out with your fingers and the brush. After brushing the undercoat, use the same brush to go over the topcoat, brushing with the lay of the coat.

Repeat this after bathing with **COWBOY MAGIC® Rosewater Shampoo** and **COWBOY MAGIC® Rosewater Conditioner**.



Long double coat, showing a long, straight and coarse outer coat and a very thick undercoat all over the body. You see this coat on Samoyeds, Chow Chows and Collies. You'll need a slicker brush or pin brush and a large, wide-tooth comb. Brush the dog's entire body with the slicker or pin brush first, taking sections of the dog's hair and separating it with your hand. Brush outward from the skin to help remove loose hairs in the thick undercoat. After you have gone over the entire dog, take the wide-tooth comb and place it deep within the coat, parallel to the skin. Comb outward to remove more loose undercoat. Since the undercoat is thickest on the back legs and around the neck, you may find some mats that need addressing. Add a dime size of **COWBOY MAGIC® Detangler™ & Shine** and work the mat out with your fingers and the brush.

Short, wiry coat with the hair thick and hard to the touch. Airedales, Wirehaired Dachshunds and Scottish Terriers have this kind of coat. A slicker brush and a stripping comb are

what you need to groom this type of coat. Start by using the stripping comb, and run it lightly along the back of the dog, thinning the overgrown wiry coat. This thinning does not need to be done at every grooming session, only when the



guard hairs on the dog's coat begin to protrude along the dog's back. After thinning out the coat, brush the coat in layers from the skin outward with the slicker brush. Bathe with **COWBOY MAGIC® Rosewater Shampoo**.

Long coarse coats have a softer undercoat mixed in. The Shih Tzu, Lhasa Apso and Tibetan Terrier are examples of dogs with long coarse coats. The tools you need include a slicker brush and a smooth bristle brush. If your dog's coat is matted, have **COWBOY MAGIC® Detangler & Shine** on hand. Start by removing any mats that you find by placing a dime size



of **COWBOY MAGIC® Detangler & Shine** on the mat and working it out with your fingers and the brush. Next, using the pin brush, brush the coat out gently in the direction that it grows. Then, go over the entire

coat again with a soft bristle brush. Bathe your dog with **COWBOY MAGIC® Rosewater Shampoo** afterwards. Follow with **COW-**

BOY MAGIC® Rosewater Conditioner.

Long silky coats, like those seen on the Yorkshire Terrier, Maltese and Silky Terrier, have no undercoat. The biggest challenge in grooming a long silky coat is dealing with the mats that often form in the fine hair. **COWBOY MAGIC® Detangler & Shine** can be your



best friend when it comes to removing these mats. Add a dab of the product to the mat and work it out with your fingers and with a slicker brush. After all mats are removed,

brush the entire coat with the lay of the hair. After grooming, bathe the dog with **COWBOY MAGIC® Rosewater Shampoo** and follow with **COWBOY MAGIC® Rosewater Conditioner**. Dry with a hair dryer, and brush the coat out.

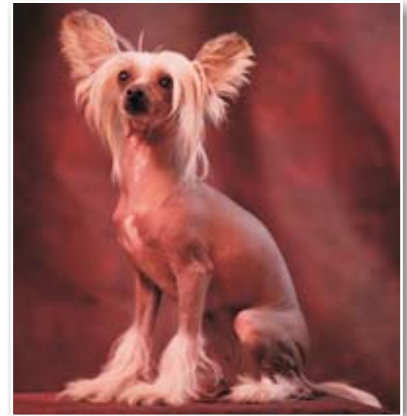
Curly coats feature close curls that are thick and soft. Poodles and Bichon Frises have this kind of coat. You'll need a soft slicker brush for this type of coat.



Whether your dog is clipped in a modified show clip or a puppy clip, use the slicker to brush the coat against the way it grows to make it fluff up. Next, give the dog a bath with **COWBOY MAGIC® Rosewater Shampoo**, and apply

COWBOY MAGIC® Rosewater Conditioner. Dry him with a towel, and then fluff-dry him by using a blow dryer while brushing him with the soft slicker brush from the skin out.

Hairless coats, like those seen on the Chinese Crested, Mexican Hairless and Inca Orchid, don't have actual hair on their bodies (the Chinese



Crested does have tufts on the head, legs and tail) but do have sensitive skin. Hairless dogs may not need brushing, but they do need baths. Use **COWBOY MAGIC® Rosewater Shampoo**, adding a scrub with a gentle face puff while shampooing. You can also wash the hair on top of the dog's head with this shampoo, along with the tufts of hair on its feet. Be sure to rinse the dog thoroughly after the bath. Follow with **COWBOY MAGIC® Dry Skin Lotion** on the dog's skin. If the dog will be going outside, follow with sunblock at SPF 15 or higher.

Whether your dog's coat is long and thick or short and slick, using the best grooming products and techniques for his coat type will leave him looking his best.



Chapter 2

Detangling Matted Coats



In addition to his good-natured disposition, your dog's long, silky coat is one of his most wonderful traits. But it can also be one of his most challenging. Long coats have a tendency to develop mats and tangles, and getting them out can be very tricky for you and an unpleasant experience for your dog. Long-haired dogs that like to get wet are especially likely to develop these coat problems.

Removing mats and tangles can be difficult, especially if you have a dog who doesn't like to stand still. Plus, sensitive dogs won't appreciate you pulling on their coats, and may be unwilling to tolerate the procedure. Consider using treats to help your dog asso-

ciate grooming sessions with something pleasant.

The best approach is prevention. Brush your dog daily to keep his coat clean and to prevent mats from developing. Tangles are typically easy to avoid with regular grooming. Fine-coated dogs and dogs with long, thick undercoats will quickly mat if they are not brushed regularly. If your dog loves the outdoors, then he will likely pick up burrs, sticks and leaves that can cause his coat to mat more quickly.

If you find your long-coated dog has developed mats and tangles, start working on them now before the situation gets com-



pletely out of hand. Follow these steps to get rid of those problem spots.

1. Assemble your tools. In order to conquer mats and tangles, you need the right equipment. A dematting tool, a mat splitting tool and a slicker brush are your best friends when taking on mats and tangles. You can find these tools at a pet supply store, or on the Internet.

2. Have good products on hand. To make the dematting and detangling process easier on both you and your dog, arm yourself with the best products for the job. **COWBOY MAGIC® CONCENTRATED DETANGLER™ & SHINE** helps loosen the hair caught up in mats and tangles. Since you'll need to bathe your dog after you remove mats and tangles,



have **COWBOY MAGIC® ROSEWATER SHAMPOO** and **COWBOY MAGIC® CONCENTRATED ROSEWATER DETANGLER™ & CONDITIONER** nearby.

3. Find the mats and tangles.

Brush your dog with the slicker brush to locate mats and tangles. Mats often form under the ears, below the neck, under the belly and along the back legs.



4. Apply detangler. Start the detangling and dematting process by applying **COWBOY MAGIC® CONCENTRATED DETANGLER™ & SHINE** to areas of the coat that are matted or tangled. Rub the product into the coat so it penetrates the problem area.

5. Use your fingers. Work the mat or tangle out with your fingers by pulling and easing the hair apart a little at a time. This is painstaking work, but your efforts will pay off if you keep at it. If you can't break through the mat after working on



it for a considerable amount of time, use the mat splitting tool to cut through the mat. Be sure to cut in the direction the hair grows.

6. Use your brush. When you have removed as much of the tangle or mat as you can, use the slicker brush to finish the job. For tangles, gently brush a few hairs at a time to separate them from the rest of the tangle. For mats, brush in the direction the hair grows, adding more **COWBOY MAGIC® CONCENTRATED DETANGLER™ & SHINE** if necessary to loosen the hairs.

7. Bathe your dog. Once you have removed as many of the mats and tangles you can, give your dog a bath. Be sure all the mats and tangles are gone before you wet your dog, as water will make a tangle worse and a mat tighter and harder to get out. Use **COWBOY MAGIC® ROSEWATER SHAMPOO** to get your dog clean, and follow with **COWBOY MAGIC® CONCENTRATED ROSEWATER DETANGLER™ & CONDITIONER** to help ensure mats and tangles don't develop as you are drying your dog.

8. Prevent problems. To help prevent mats and tangles from coming back, apply **COWBOY MAGIC® CONCENTRATED DETANGLER™ & SHINE** to your dog's coat after he's completely dry. If your dog likes to swim, put **COWBOY MAGIC® CONCENTRATED DETANGLER™ & SHINE** on him just before he goes into the water to help prevent

mats and tangles from forming.

If your dog's coat has been neglected and he has a particularly bad case of matting or tangling as a result, he may need to go to a professional groomer for clip or a shave. Or, if you have a good pair of clippers and know how to use them, you can do it yourself. If your dog has developed a skin irritation or sores as a result of having matter tangled in his coat, he may need to visit your veterinarian.

Clipping the coat to a very short length will enable you to start over and help prevent mats and tangles from forming in the first place.

With the right tools, products and procedures at your fingertips, you can keep mats and tangles at bay, even if your dog is prone to them. Your dog will be happier for the extra effort, and so will you.



Chapter 3

Proper Ear Care

The canine ear is amazing part of the dog's body. Using their superior auditory system, dogs can hear things that humans can't even fathom. They can hear an approaching thunderstorm up to several hours before we notice anything.



They can detect ultrasonic sounds, like the cry of a baby mouse when it's distressed, or the sound rats make after mating. They can hear sounds four times farther away than we can,

and they can distinguish their owners' footsteps from the footsteps of other people, even in a crowd.

Because dogs' ears are so important to them—and to us for all they do to help us understand our four-legged companion's moods and attitudes—we need to take good care of this valuable part of the canine anatomy. One way to do this is through good grooming.

The type of care you provide for your dog's ears depends on your dog's particular type of ear. Dogs with long, hanging ears need more atten-

tion than the ears that stand straight up. Dogs with hairy ears also need more grooming in this area than dogs that have sleek coats.

If your dog has a lot of hair on his face, chances are he also has hairy ears. Breeds like P o o d l e s ,



Lhasa Apsos and Shih Tzu tend to have a lot of hair in their ears. The more hair in your dog's ears, the damper it is inside them. And with dampness comes the risk of ear infection.

To trim the hair from your dog's ears, follow these steps.

1. Assemble your tools. You'll need a pair of blunt-nosed scissors designed for cutting hair, available at drug stores. Have some **COWBOY MAGIC® CONCENTRATED DETANGLER™ & SHINE** on hand as well.

2. Prepare your dog. Make sure your dog is calm and ask him to sit in front of you. If your dog is the wiggly type, have someone help you by holding your dog steady as you work.

3. Prepare the hair.

Apply a little **COWBOY MAGIC® CON-**



Dave King © Dorling Kindersley

CENTRATED DETANGLER™ & SHINE

to the hair to make it smooth and easier to cut.

4. Position the ear. Hold your dog's ear out to the side so the hair you cut does not drop down into his ear canal.

5. Trim the hair. Using the scissors, trim the hair that is protruding out of his ear. Cut close to the skin, but not so close that you accidentally nick him.

If your dog is very uncooperative with this procedure, consider taking him to a professional groomer. Otherwise, you could end up hurting him with the scissors while he is struggling.

If your dog has floppy ears, you need to keep them clean to avoid infection developing inside, where air doesn't circulate. Bloodhounds, Labrador Retrievers and Cocker Spaniels are just a few of the breeds that have floppy ears that are prone to infection.

To clean your dog's ears, following these steps:

1. Assemble your tools. Dampen a soft, cotton cloth or a cotton ball with mineral oil. You can also skip the mineral oil and use commercially sold ear wipes for dogs, which are available at pet supply stores.

2. Prepare your dog. Have your dog sit calmly

in front of you, or have a helper hold him steady.

3. Clean the ears. Wipe the insides of his ears with the cloth or cotton ball, taking care to clear out the dark, waxy material you see inside.



You should only need to do this about once a month, as you don't want to remove too much of the necessary earwax from your dog's ears. Some wax is necessary to help protect the inside of the ear. If your dog's ears become dirty again within a week, or if you notice an unpleasant odor coming from them, your dog may have an ear infection. Take him to a veterinarian right away.

Provide your dog with good ear care to keep him comfortable and happy. A dog that hears well is not only a dog that enjoys life. He's also a dog who listens better!

